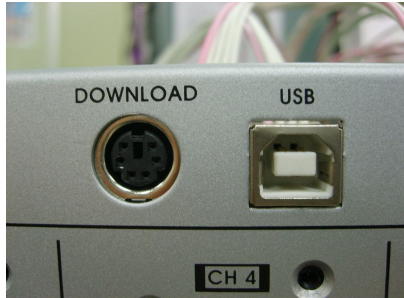


MSHG-600 NVR(Pattern&Timing) file Download Instructions

1. Plz install **USB drive** on your PC before work. (Control Panel >> New Hardware Wizard)
2. Turn off the main power.
3. Connect to the PC's **USB(A type)** port using USB cable from MSHG-600's **USB(B type)** Connector.



< USB port at rear panel >



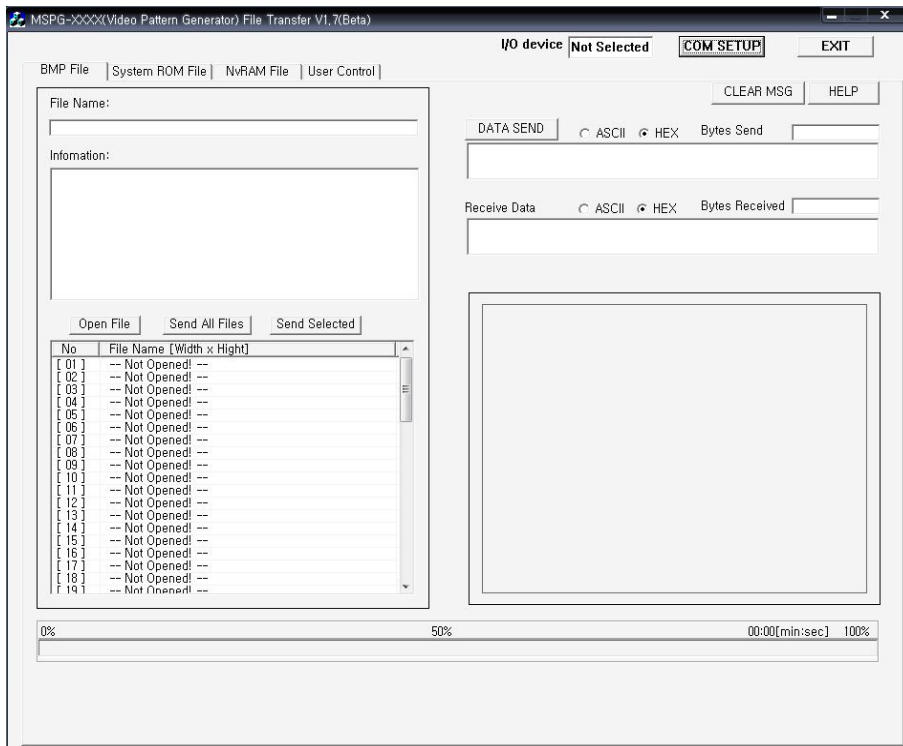
< USB Cable A-B Type >

4. Turn on the main power. (Make sure cable is properly connected)
5. You can't see any change on the front LCD. (**different with main program download**)

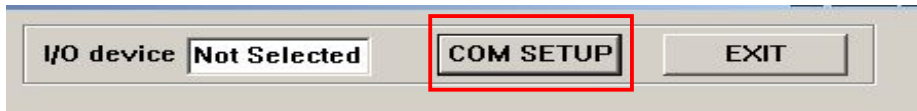


6. Run the PC program **MSPG File Transfer V2.0**
 - Make sure put **FTD2XX.dll** in same folder with **MSPG File Transfer V2.0**

7. Initial display will be shown as below.



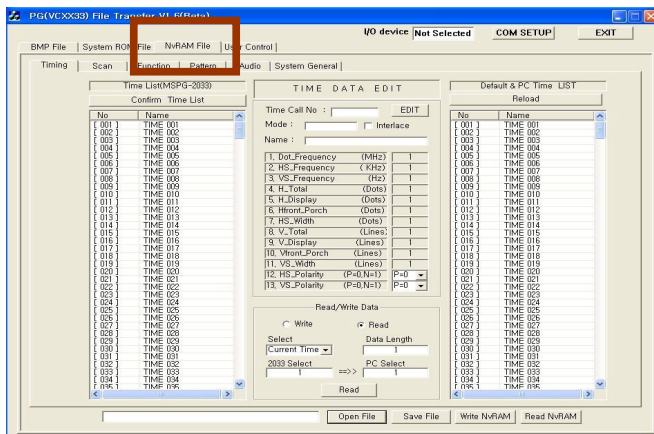
7. Click **“COM SETUP”** button that is located in upper right corner in order to connect communication.



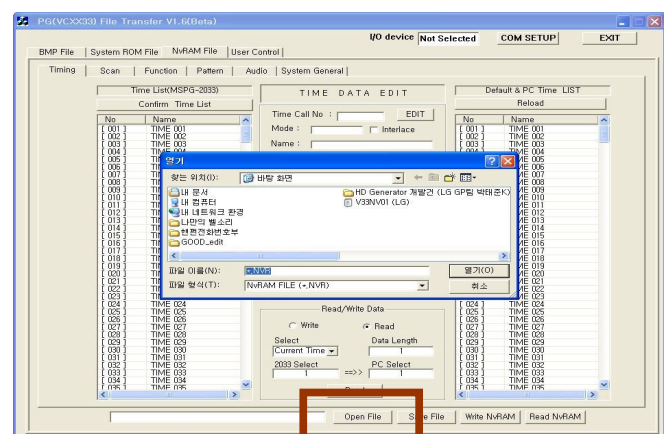
8. You can see follow window then push (Y).



10. Click **NvRam File** tap

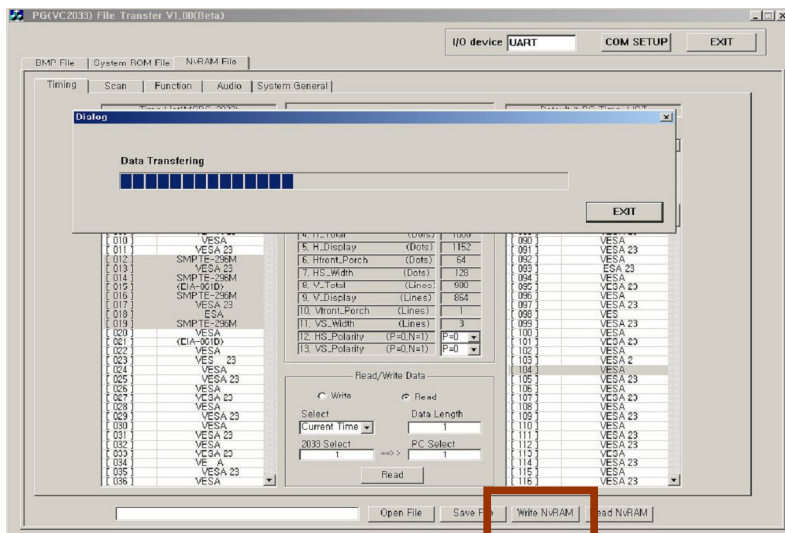


11. Click **Open File** tap and find **NVR** file then **Open(O)**



12. File information will shown in information window.

13. Click **Write NvRAM** if you want to download NVR file from PC to Generator.



14. When you finished download, please turn off main power and pull out USB cable from Generator.

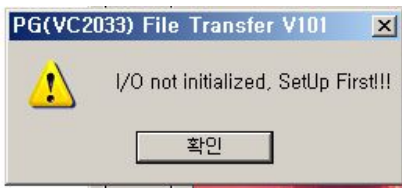
15. Turn on main power to start up-dated NVR operation

Notice :User can't see NVR version version on the LCD .

And there's no buzzer even though download finished.

Trouble Shooting

1.I/O not initialized, Setup First



T: This trouble can be occurring when cable is disconnected or setup value are not property.

S: Please restart setup process again.

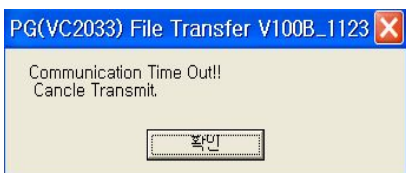
2.Time out!!!



T: This trouble can be occurring when power is off or cable is disconnected

S: Check power status and cable conditions and restart setup process again.

3.Cancle Transmit



T: This trouble can be occurring when power is off or cable is disconnected

S: Check power status and cable conditions and restart setup process again.

4. NvRAM File Not Loaded

T: This trouble can be occurring when time data is empty

